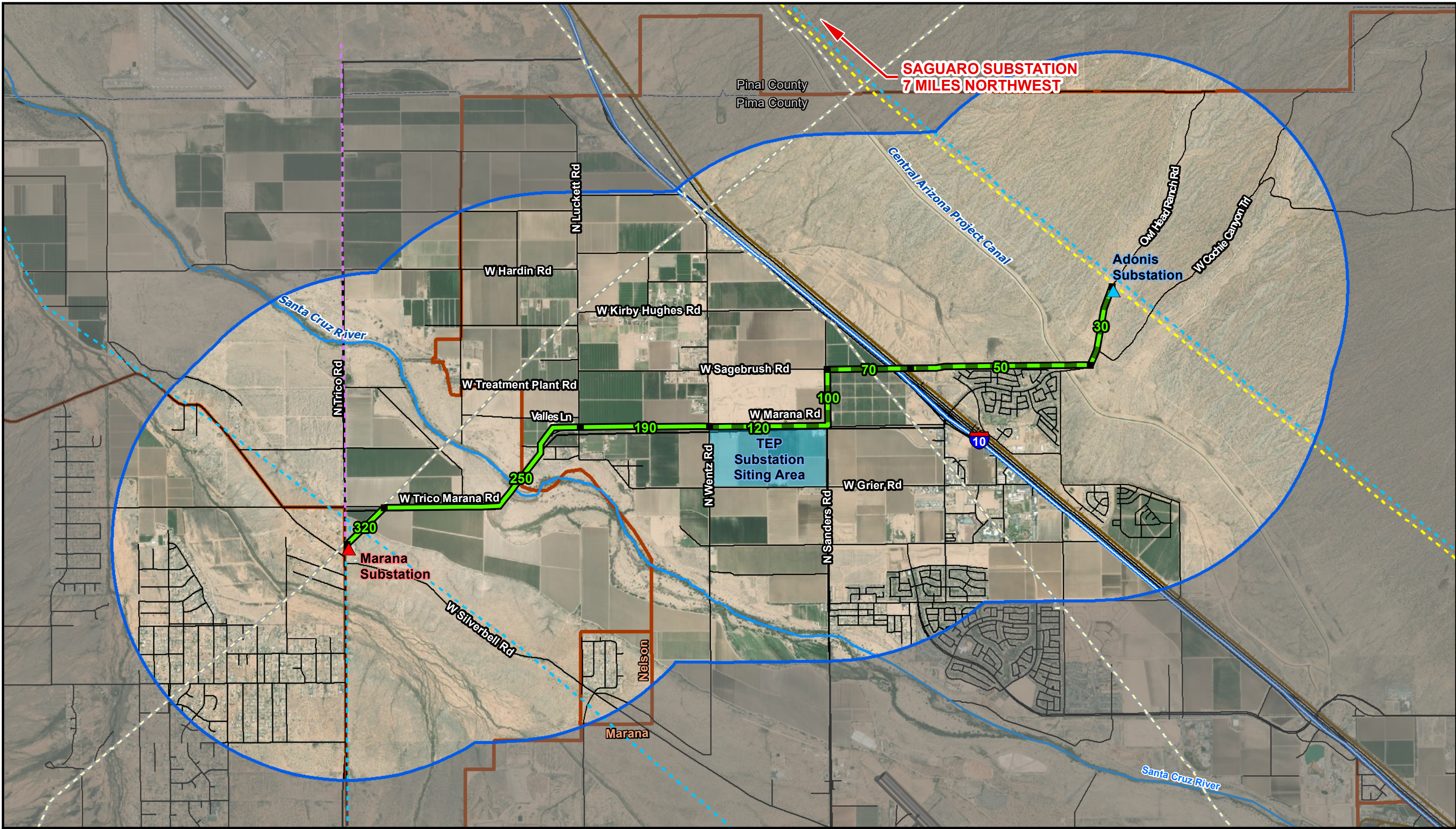


Path: I:\ESP\Projects\AZPE\CEC\_Saguaro\_Marana\_115kV\Figures\CEC\_Application\FIG\_01\_00\_Prefered\_Route\_DoubleCircuit.mxd sjensley 4/27/2022  
 Service Layer Credits: Source: Esri, Maxar, GeoEye, Earthstar Geographics, CNES/Airbus DS, USDA, USGS, AeroGRID, IGN, and the GIS User Community



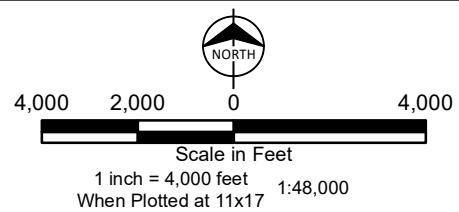
**SAGUARO SUBSTATION  
7 MILES NORTHWEST**

- Reference Features**
- Study Area
  - Interstate
  - Major Roads
  - Local Road
  - Railroad
  - County Boundary
  - Municipal Boundary

- Utilities**
- ▲ Existing Substation
  - ▲ Proposed Substation
  - Existing Pipeline

- Existing Transmission Lines**
- Existing 138kV Transmission Line
  - Existing 115kV Transmission Line
  - Existing 24.9kV Distribution Line

- Proposed Route**
- Proposed Route Single Circuit 115kV
  - Proposed Route Double Circuit 115/138kV
  - Route Link Node
  - 100 Route Link Number



**Exhibit A  
Proposed Route  
Saguaro-Marana 115/138kV  
Transmission Line Project  
Arizona G&T Cooperatives**